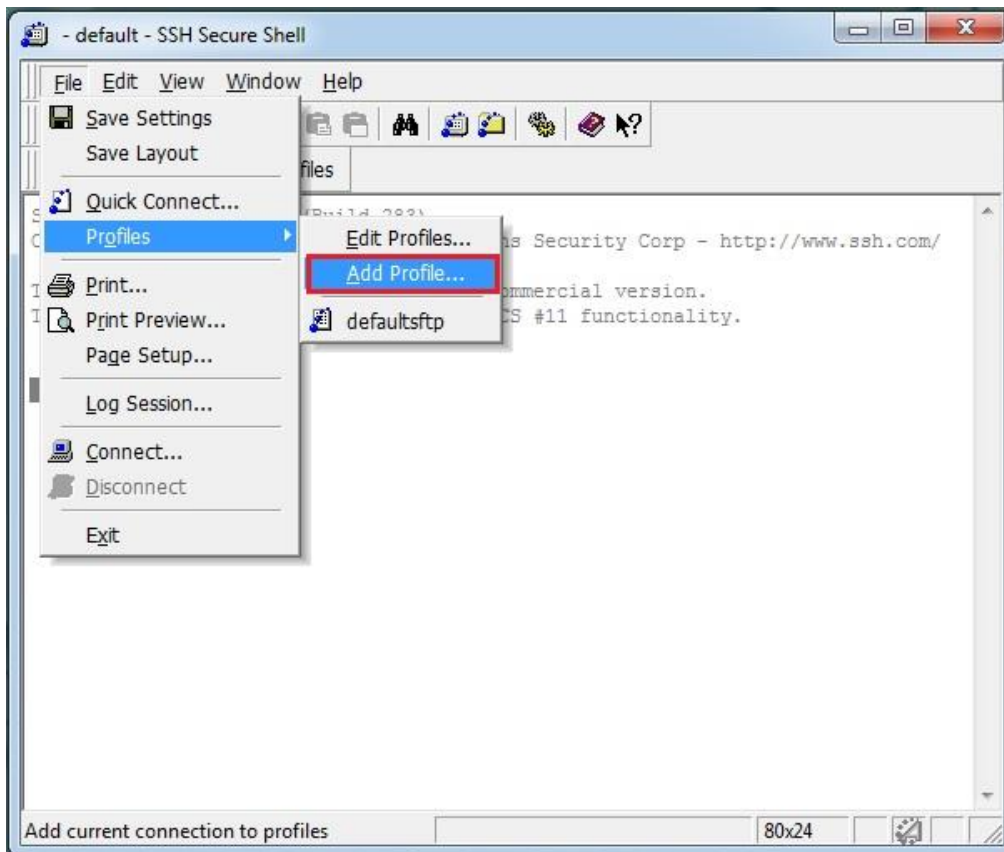


# How to run SAS in X-Windows mode

1. Open SSH Secure Shell.



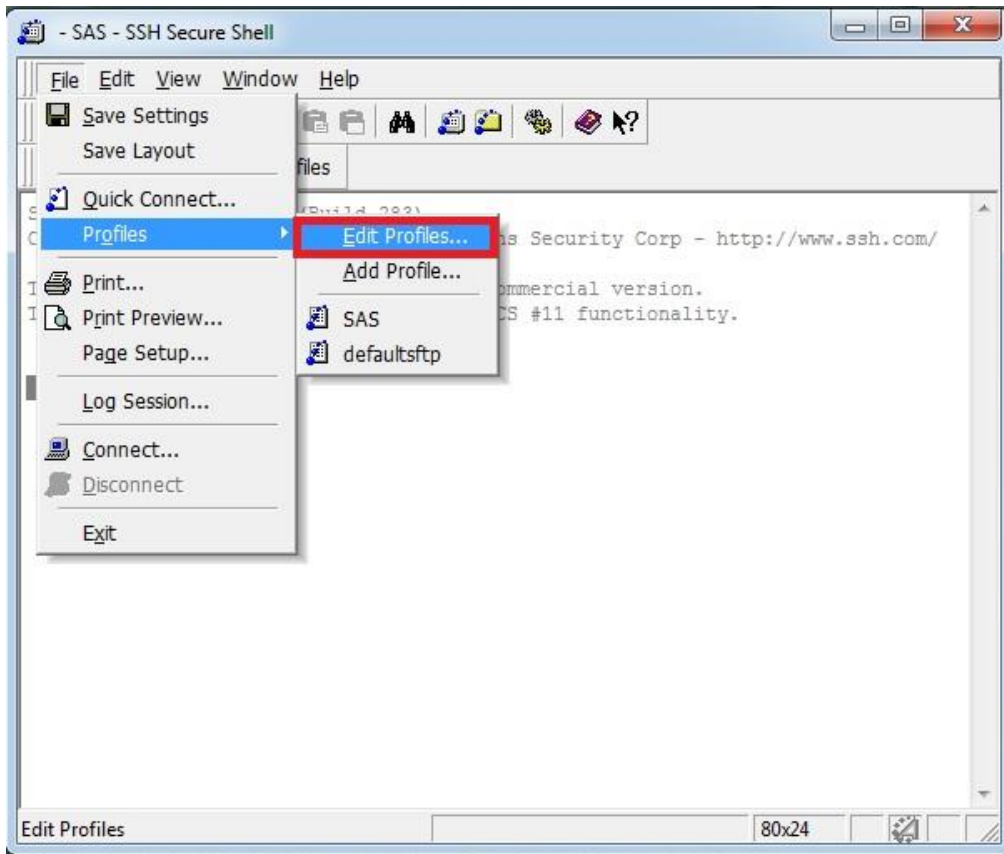
2. Click **File => Profiles =>Add Profiles...**



3. Enter a name for the profile (Ex. SAS or Compute), then click **Add to Profiles**.



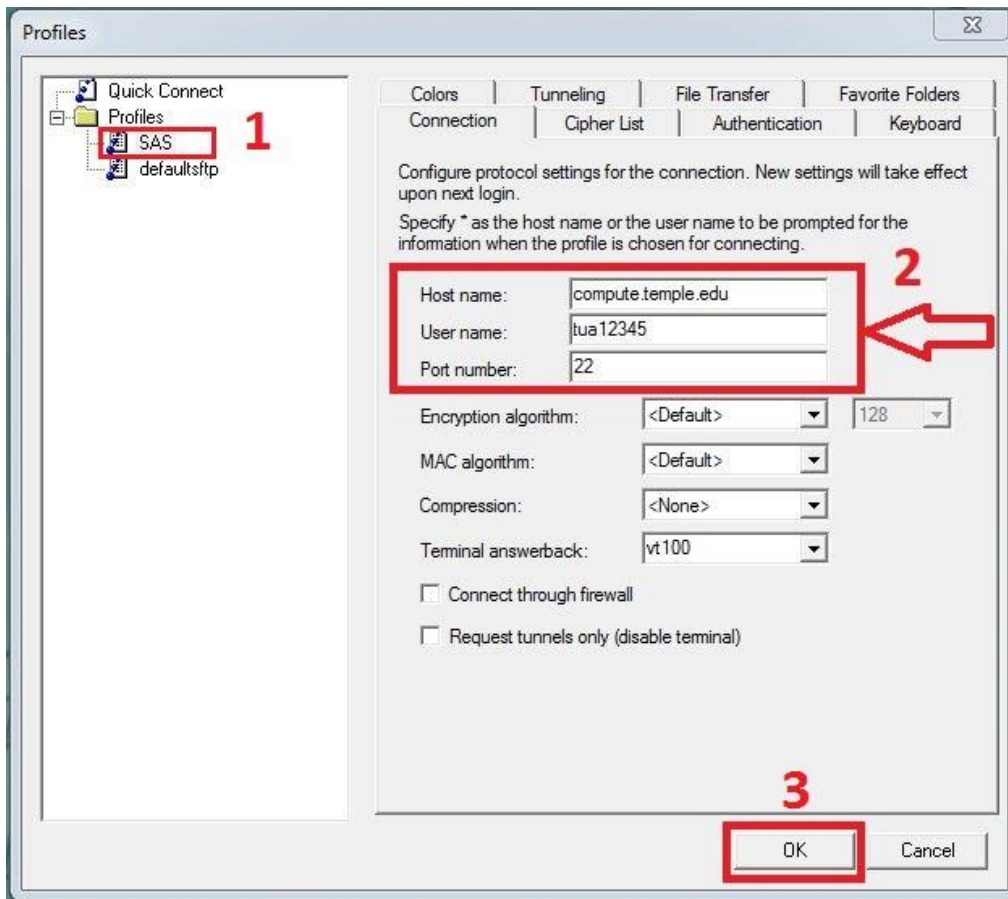
4. Click **File => Profiles => Edit Profiles...**



5. Select the profile name that you just created. (In this example is **SAS**). Then enter the following and click **OK**:

Host Name: **compute.temple.edu**

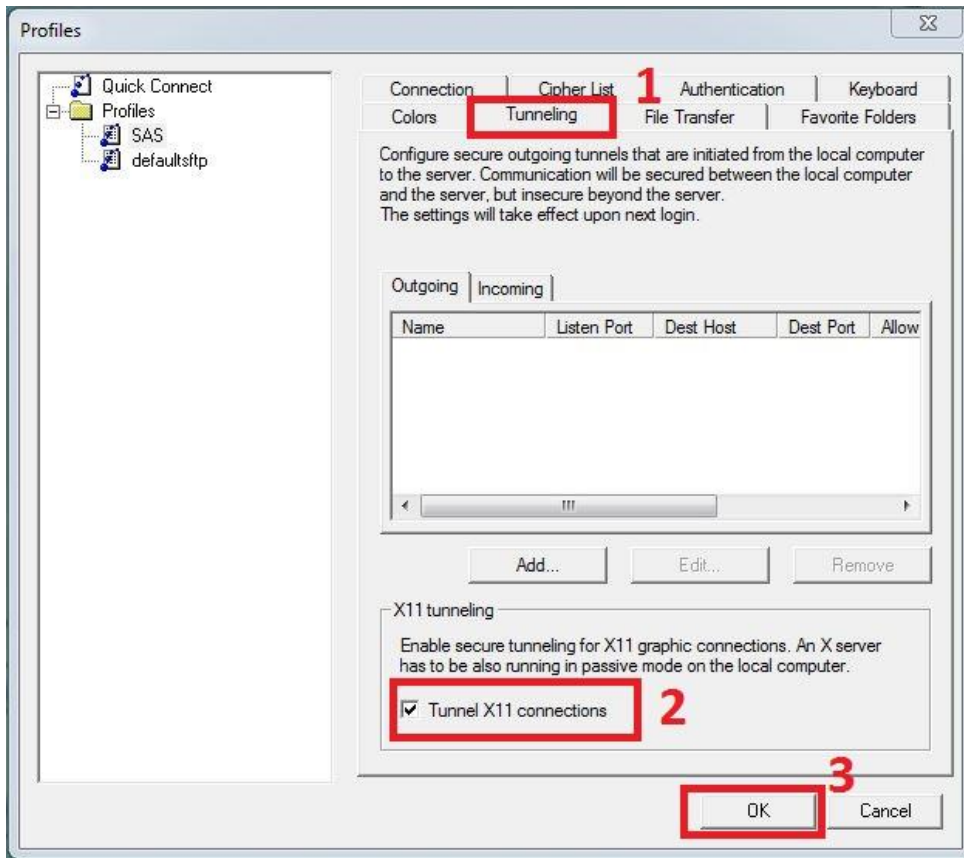
User Name: *AccessNet Username*



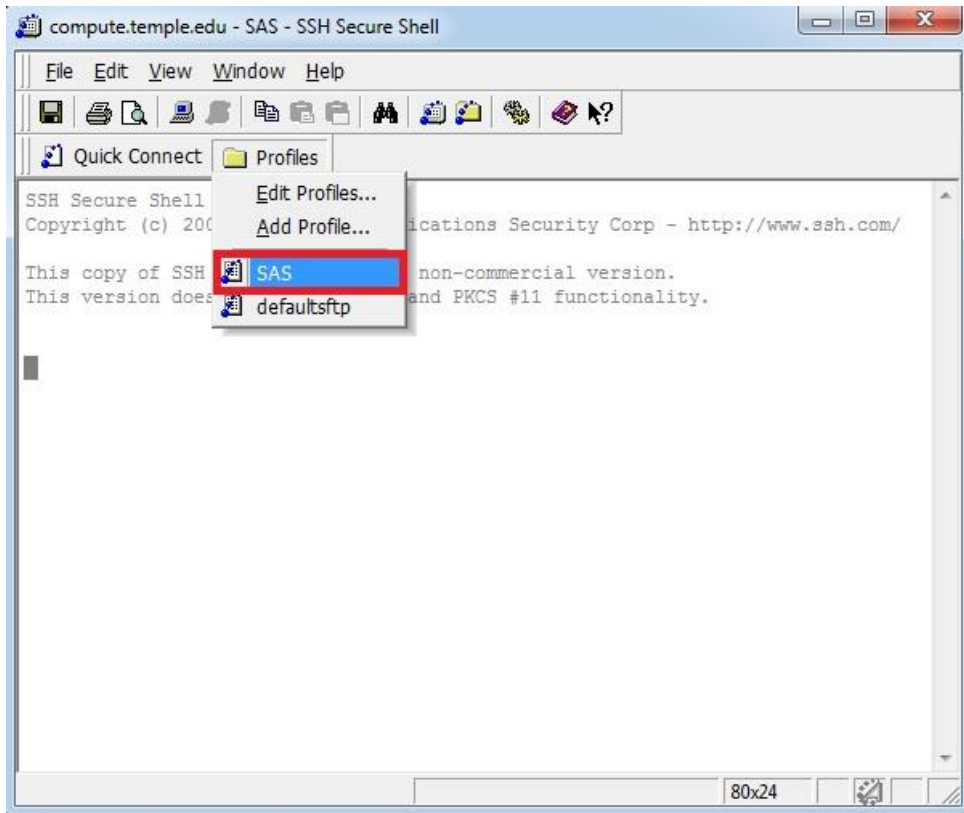
6. Click **File => Profiles => Edit Profiles...**



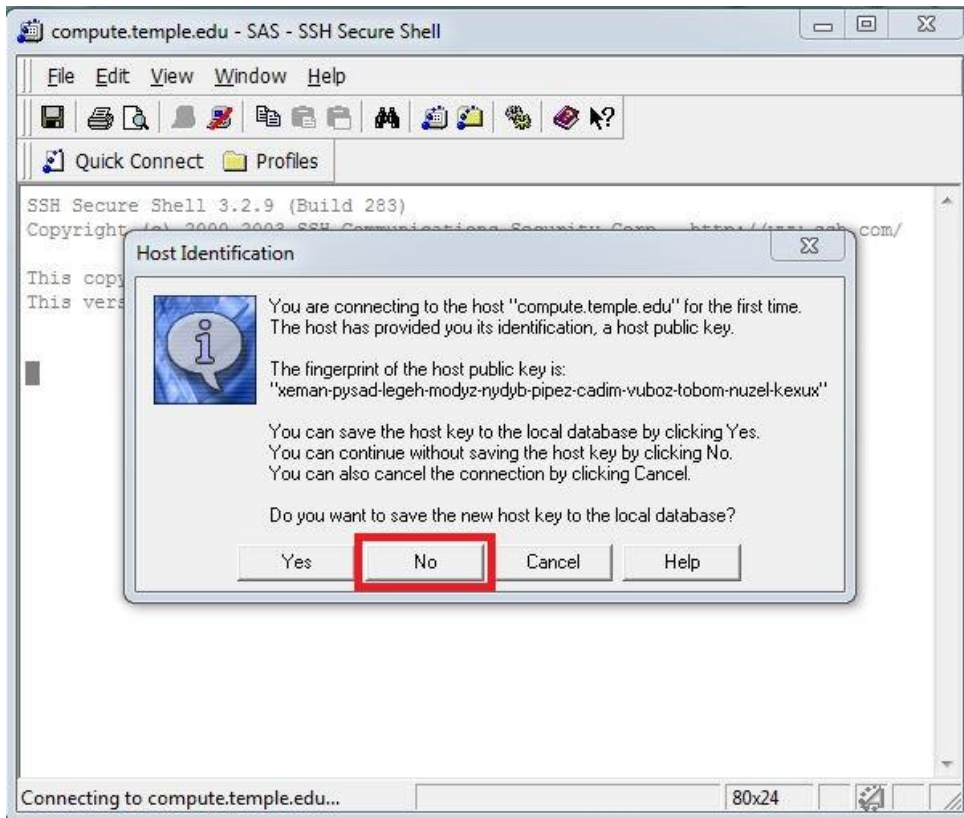
7. Perform the following:
  - a) Select the profile name that you created (*In this example SAS*).
  - b) Click the **Tunneling** tab.
  - c) Check the **Tunnel X11 connections** checkbox to enable X11 tunneling.
  - d) Check **OK**.



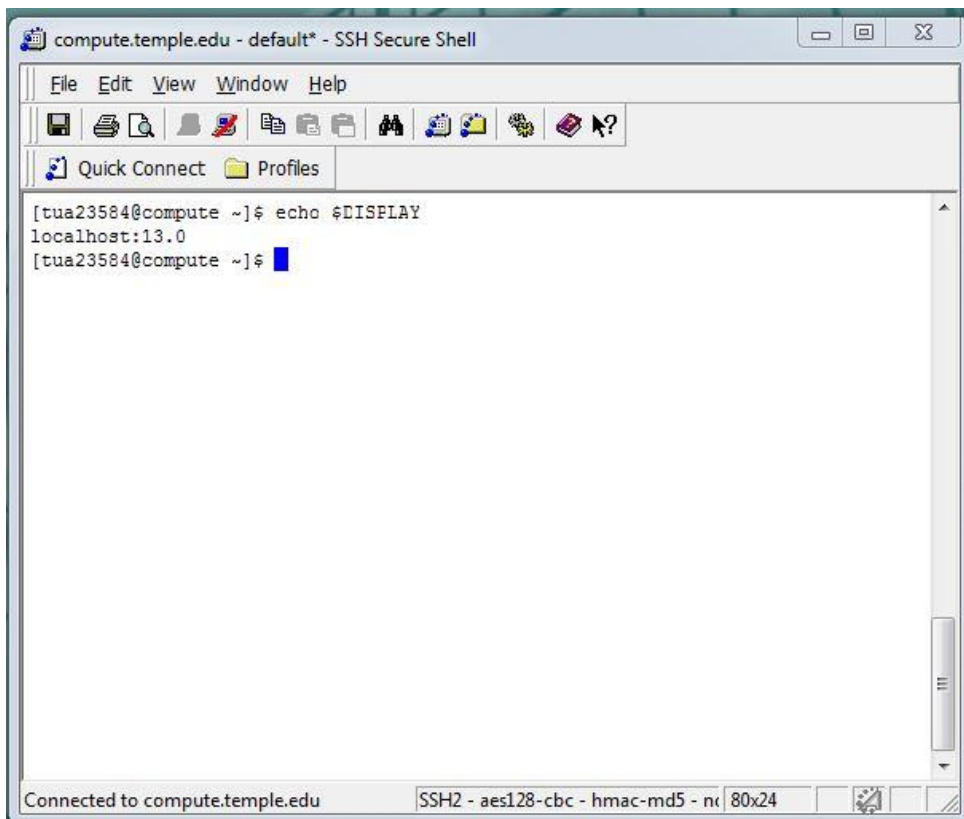
8. Click the **Profile folder** icon, then click the profile (**SAS**) that you just created.



9. When you see **Host Identification** pop-up click **NO**.



10. Make sure you have launched Xming prior to this step. You can confirm that Xming is correctly configured by running following command:  
**"echo \$DISPLAY"**



11. Type the following command if this is the first time running SAS in X-windows mode:

`xhost`

12. At the system prompt, type: **firefox&**

13. Again at the system prompt, type: **sas -helpbrowser SAS**

SAS will start and you should now be able to open SAS's Help & Documentation pages. Now in order to avoid any connection errors you should include the following in your SAS program:

**options helpbrowser=sas;xhost**