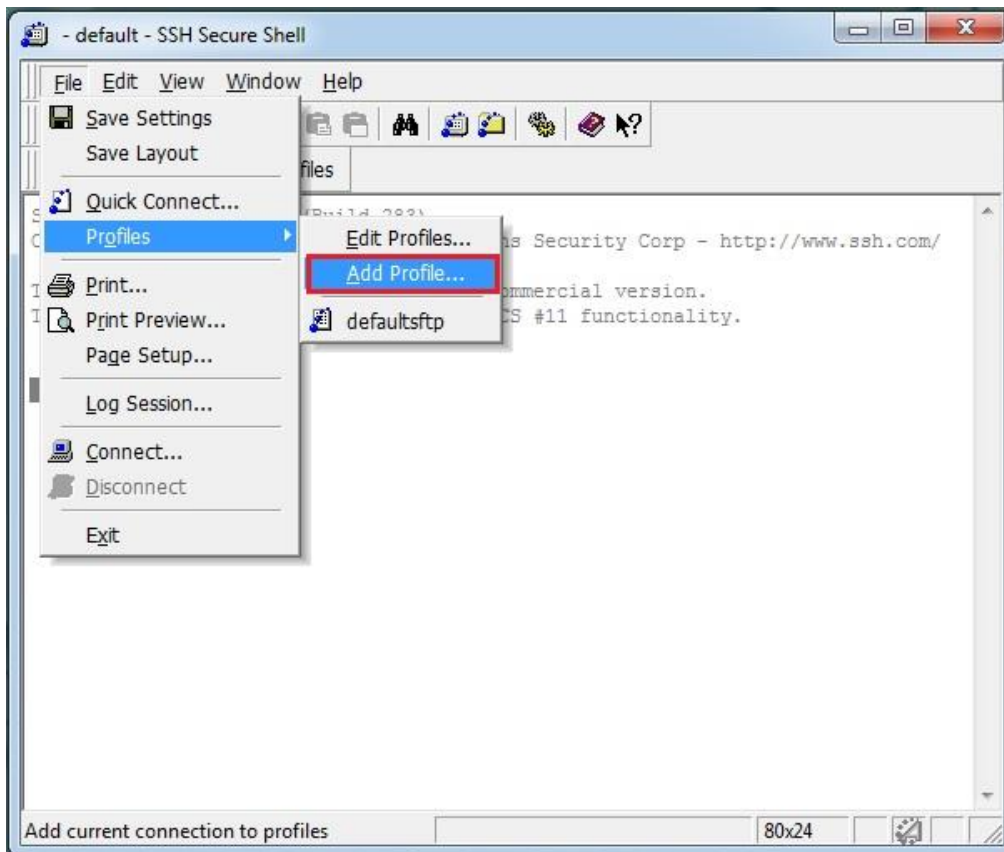


How to run Stata in X-Windows mode

1. Open SSH Secure Shell.



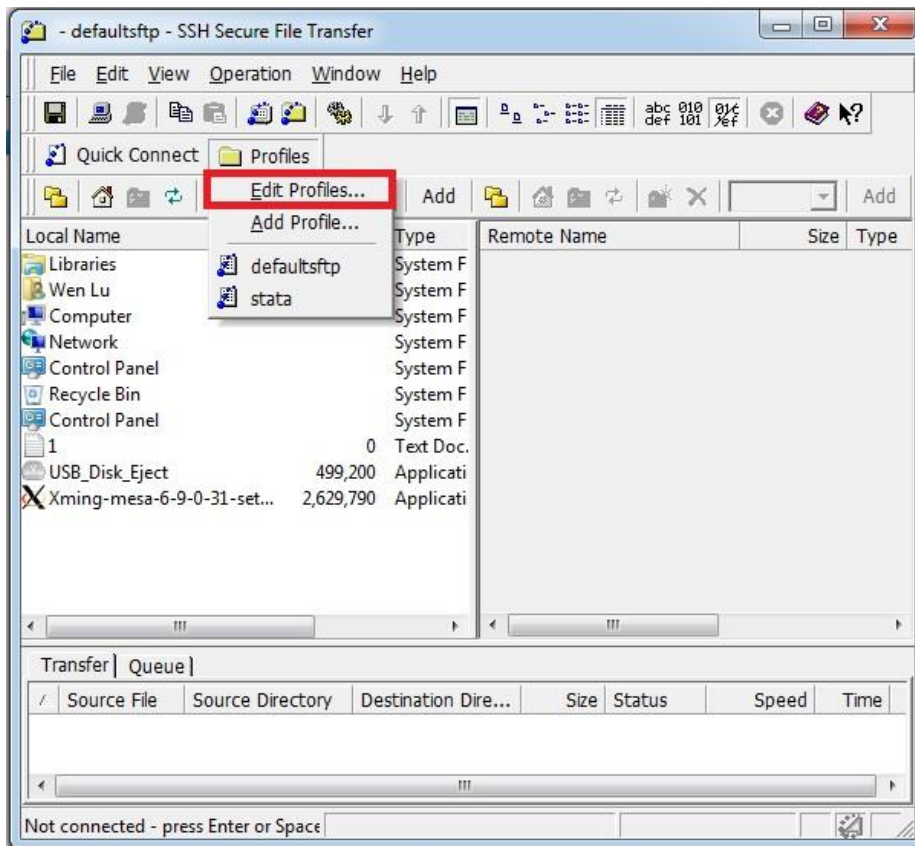
2. Click **File => Profiles =>Add Profile...**



3. Enter a name for the profile (*Ex. Stata or Compute*), then click **Add to Profiles**.



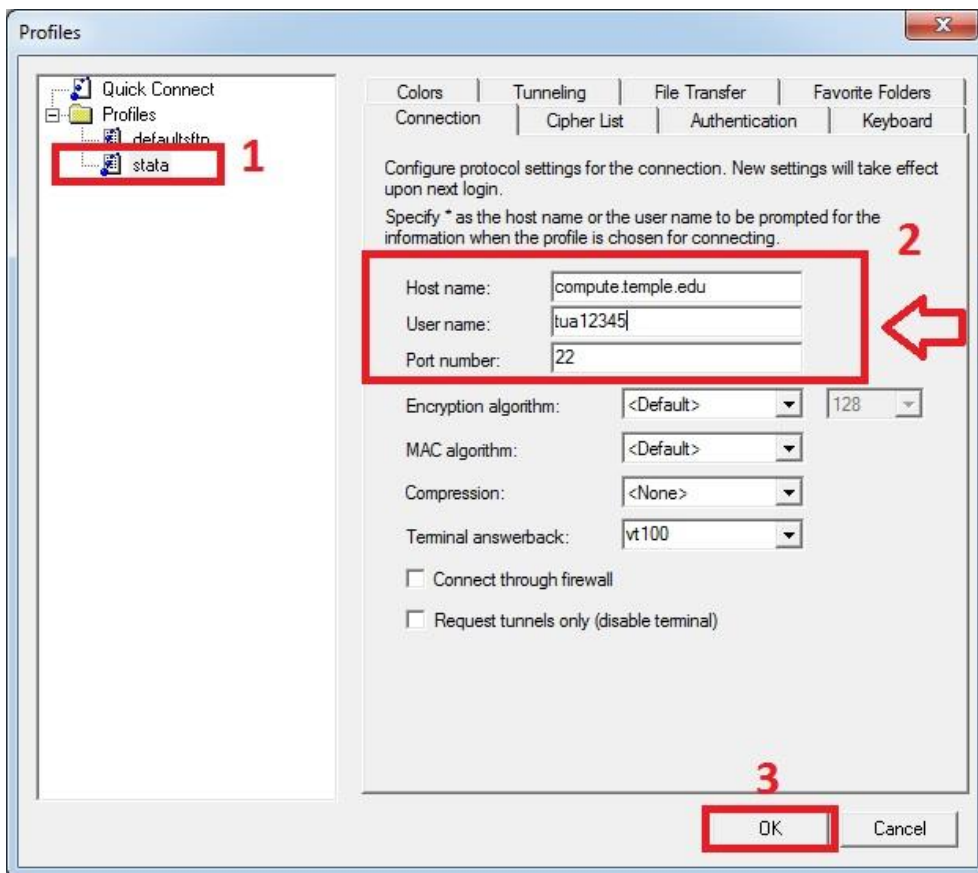
4. Click **File => Profiles => Edit Profiles...**



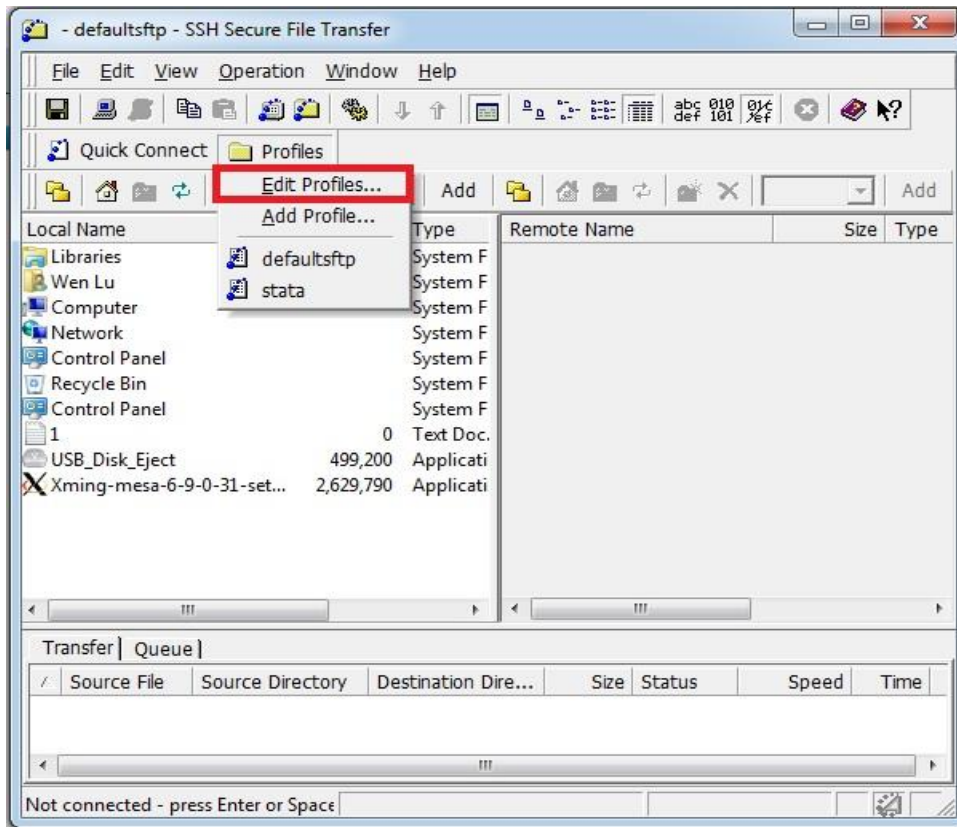
5. Select the profile name that you just created. (In this example is **stata**). Then enter the following and click **OK**:

Host Name: **compute.temple.edu**

User Name: *AccessNet username*

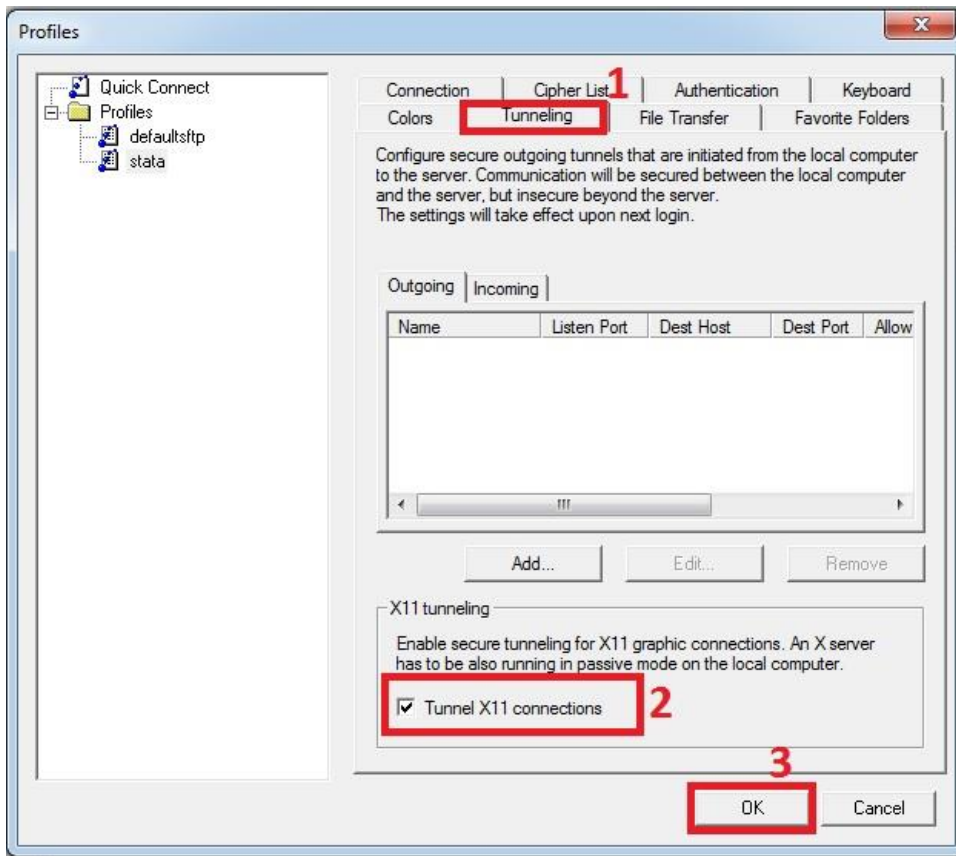


6. Click **File => Profiles => Edit Profiles...**

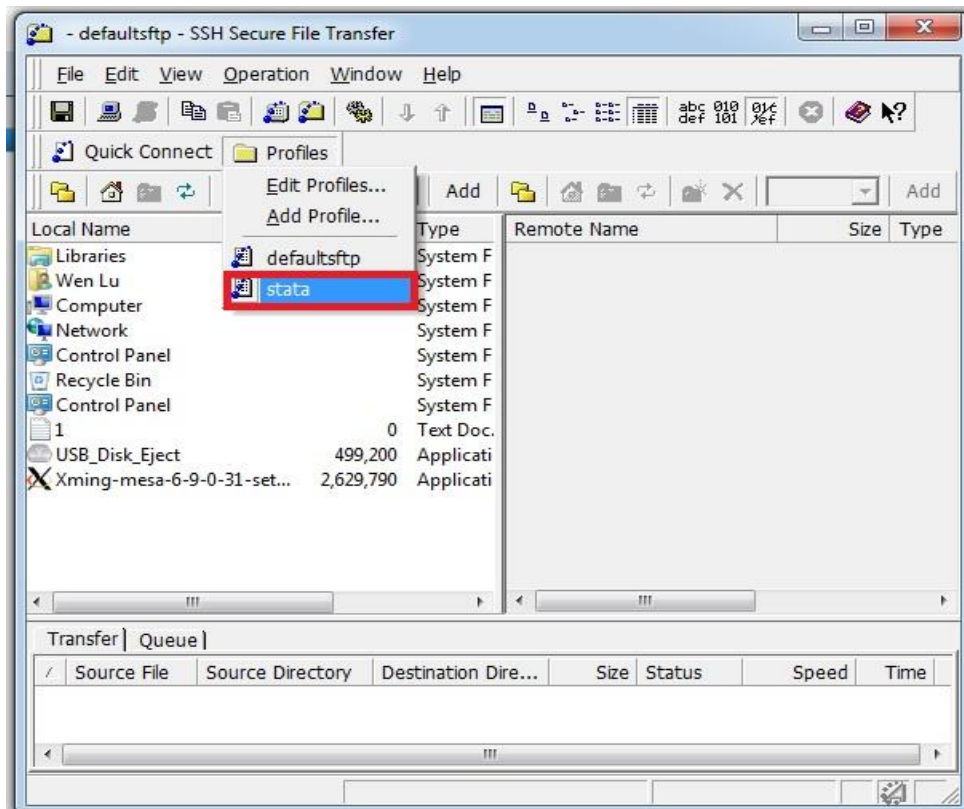


7. Perform the following:

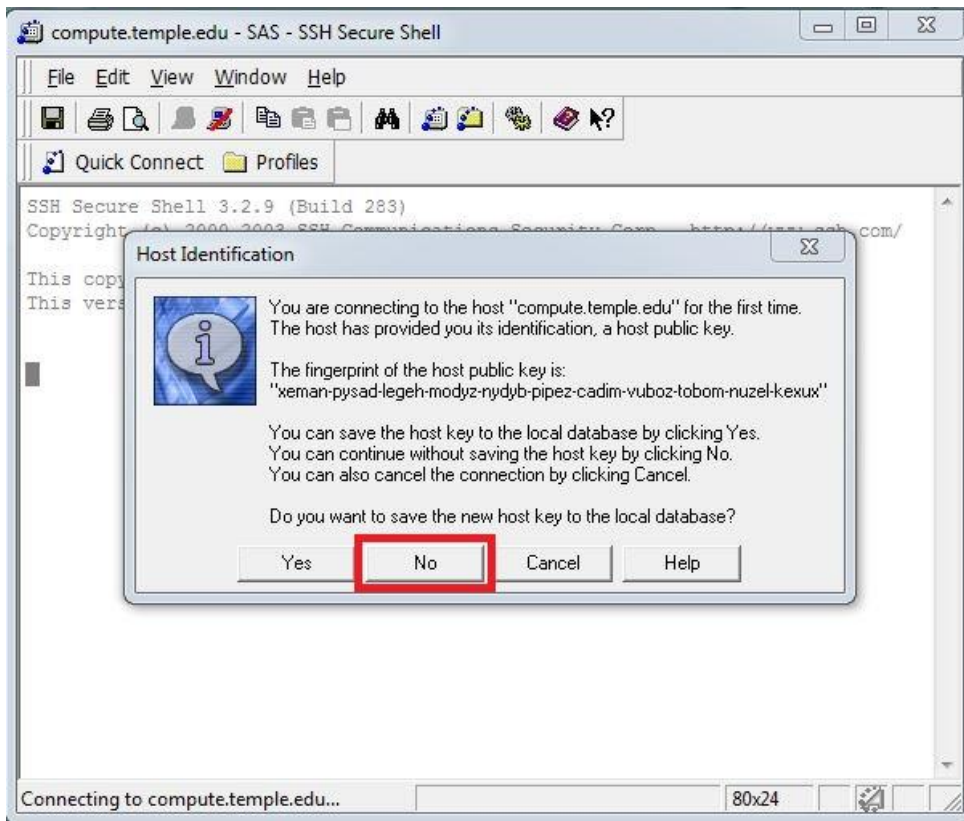
- Select the profile name that you created (*In this example stata*).
- Click the **Tunneling** tab.
- Check the **Tunnel X11 connections** checkbox to enable X11 tunneling.
- Check **OK**.



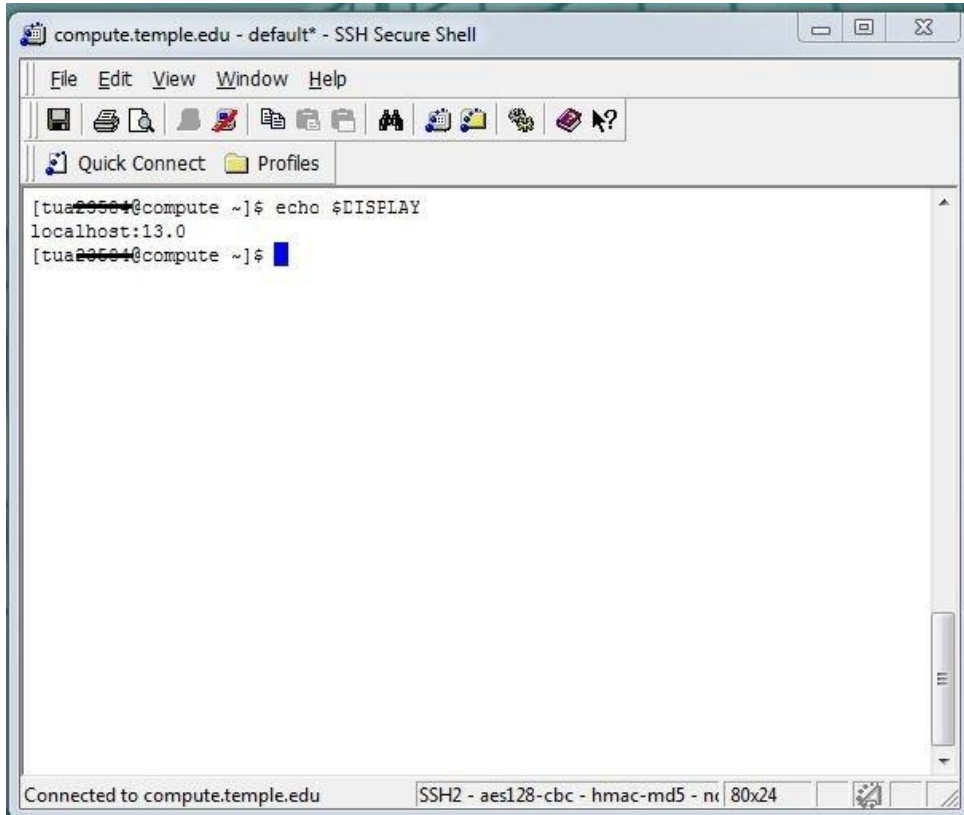
8. Click the **Profile folder** icon, then click the profile (**stata**) that you just created.



9. When you see **Host Identification** pop-up click **No**.



10. Confirm Xming is correctly configured by running following command:
"echo \$DISPLAY"



11. Type `xstata` in the command prompt to run STATA in X-windows mode:

